

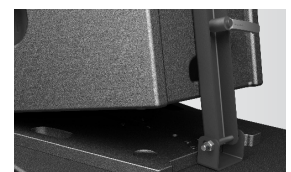
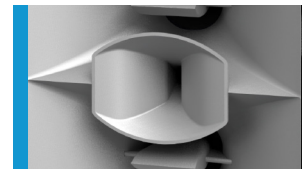


Partial grille option

Das PS 1 ist ein Hochleistungssystem für Clubs, Live-Anwendungen, Installationen in Sportarenen und Freizeitparks. Seine twin-koaxiale Mittel-Hochton-Sektion ermöglicht eine sehr präzise und gleichmäßige Abstrahlung von 80° x 40°. Alle drei Quellen verschmelzen scheinbar zu einer einzigen, mit hervorragender räumlicher Auflösung. Zwei kräftige 12-Zoll Chassis erweitern den Frequenzumfang bis 75 Hz. Das Dreiwege-Design bietet beeindruckende Dynamik bei minimalen Verzerrungen und Verfärbungen. Dank integrierter Frequenzweiche werden nur zwei Verstärkerkanäle benötigt. Ausführung der Hörner, Gitter und Gehäuse in Wunschfarbe möglich.

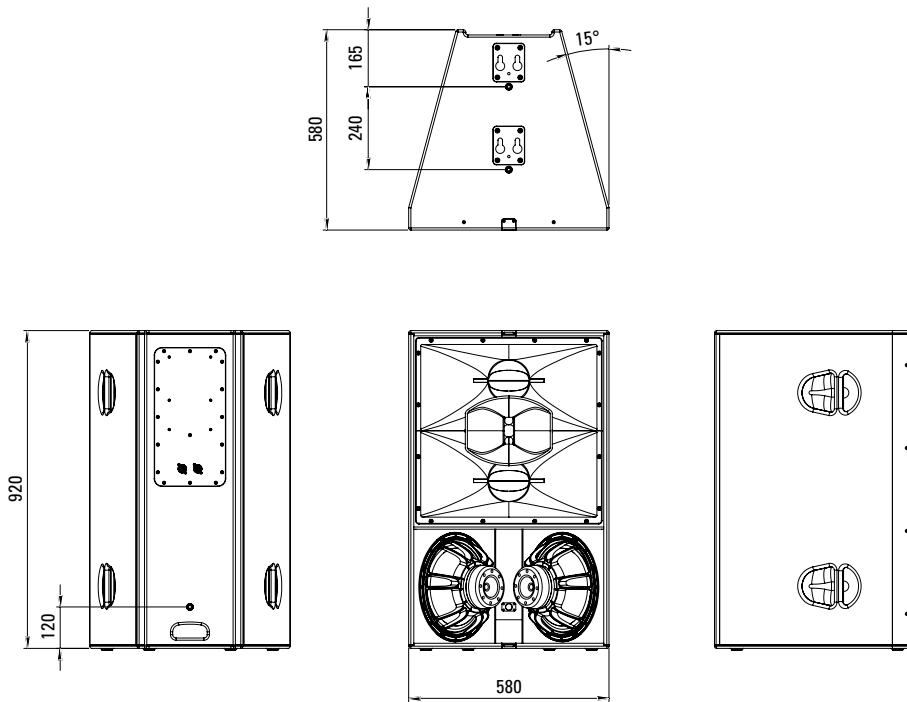
PRODUCT SPECIFICATIONS

Speaker Components	2 x 12" / 2 x 6,5" / 1,4" (3" VC)
Description	High Impact Point Source
Power AES / Peak	LF: 1500 W / 4500 W MHF: 300 W / 900 W
Impedance nominal	LF: 4 Ω / MHF: 16 Ω
SPL 1 W / Peak @ 1 m	LF: 101 dB / 138 dB MHF: 108 dB / 138 dB
Usable Range	75 Hz - 20 kHz (-6 dB)
Tuning Frequency Excursion minimum	80 Hz
X - Overpoint acoustical	300 Hz / 1,3 kHz
Coverage horizontal / vertical	80° x 40°
Enclosure Wedge Angle	30°
Connectors	2 x Neutrik Speakon NL4 in/out Coding: 1 +/- MHF, 2 +/- LF
Handles	5 x
Rigging / Fittings	Cradle plates on top side, tilt bar connection on back side
Weight	54 kg
Size height x width x depth	92,0 x 58,0 x 58,0 cm
Order No.	00780



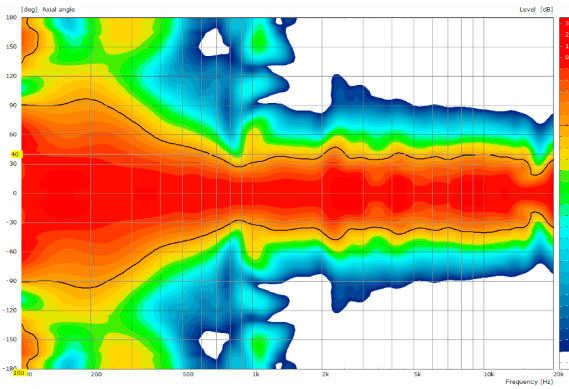
Stacking Board

DIMENSIONS

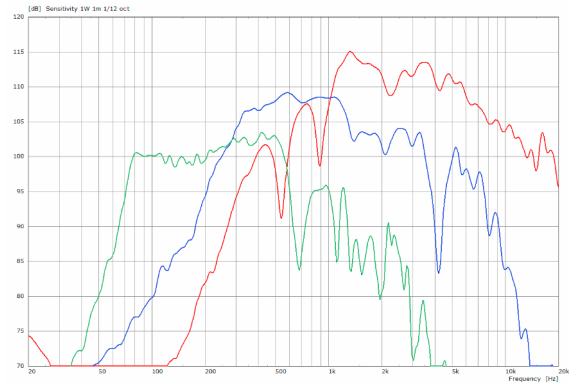


MEASUREMENTS

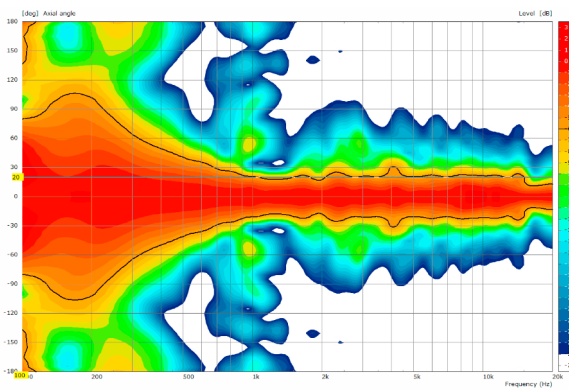
PS 1 - 2D Directivity Plot - horizontal



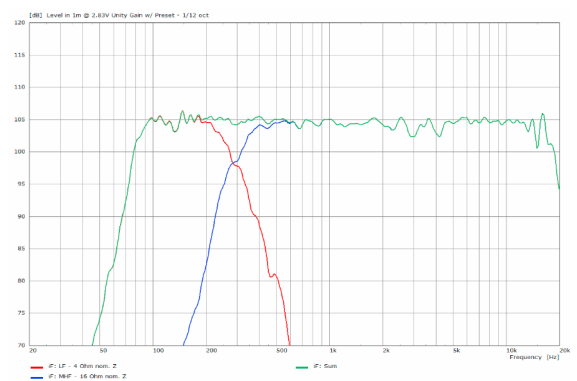
PS 1 - Sensitivity each way @ 1 W nominal input



PS 1 - 2D Directivity Plot - vertical



PS 1 - Frequency Response with 2-way preset



PS 1 - Base Model

- Gehäuse Polyurea-beschichtet in schwarz
- Horn Flare in RAL 7004 Signalgrau matt



PS 1 - Partial Grille Option

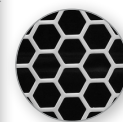
- Tieftonsektion mit grobmaschigem Hexagonallochgitter, gebürstetes Edelstahlfinish

> Optional:

- Pulverbeschichtung in RAL-Ton nach Wahl



Grobmaschiges Hexagonallochgitter



PS 1 - Full Grille Option

- Grobmaschiges Hexagonallochgitter, gebürstetes Edelstahlfinish

> Optional:

- Pulverbeschichtung in RAL-Ton nach Wahl
- Feinmaschige Lochung und innenliegender Akustikschaum / ohne Akustikschaum



Grobmaschiges Hexagonallochgitter



Feinmaschiges Hexagonallochgitter
Mit Akustikschaum



Ohne Akustikschaum

PS 1 - Flare Color Option

- Komplettes Horn Flare lackiert in RAL-Ton nach Wahl

> Optional:

- Finish in matt, seidenmatt, glänzend, metallic, Effekt, etc. auf Anfrage



ACCESSORIES PS 1

Flying Cradle



tool-free snap-in assembly,
incl. accessories
(1 x load adapter M10,
1 x ball lock pin 8 x 25 mm)
Order No. **01356**

Stacking Board



fits: PS Sub,
incl. accessories (1 x handle screw
M10 x 20)
Order No. **01395**

Wheel Board



for PS 1
Order No. **01264/PS1**

Ball Lock Pin



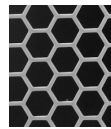
8,0 x 25,0 mm
Order No. **01380/8x25**

Handle Screw

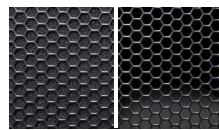


adjustable,
M10 x 20
Order No. **08375/20**

Full Grille Option

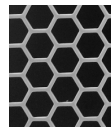


Grille with wide-meshed
hexagonal perforation
> brushed stainless steel finish
Order No. **97290/stainless steel**

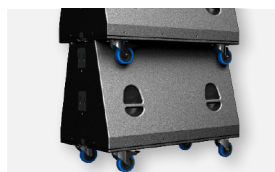


Grille with fine-meshed
hexagonal perforation
> with foam on inside
Order No. **97290/black/foam**
> without foam
Order No. **97290/black**

Partial Grille Option



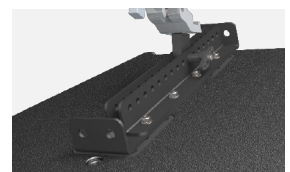
Grille with wide-meshed
hexagonal perforation for the
low-frequency section
> brushed stainless steel finish
Order No. **97295/stainless steel**



Wheel Board



Stacking Board



Flying Cradle