



Universeller Kompaktlautsprecher für die hochwertige Musik- und Sprachübertragung auf kleineren Distanzen. Gute Eignung für den Einsatz in Pubs, Bistros und als universeller Nearfill. Drei M10 Aufnahmepunkte ermöglichen in Kombination mit dem Zubehör eine einfache Installation. Auch als TR-Version mit 100 V Übertrager lieferbar.

PRODUCT SPECIFICATIONS

Speaker Components	6,5" Nd / 1,1"
Description	Multi Media Sound System
Power AES / Peak	200 W / 600 W
Impedance nominal	8 Ω (16 Ω optional)
SPL 1 W / Peak @ 1 m	93 dB / 121 dB
Usable Range	75 Hz - 19 kHz (-10 dB)
Tuning Frequency excursion minimum	91 Hz
X - Overpoint acoustical	2,3 kHz
Coverage horizontal / vertical	90° - conical
Connectors	2 x Speakon NL4MP in/out Coding: 1 +/- HiMid, 2 +/- loop thru
Rigging / Fittings	3 x M10
Weight	5,5 kg
Size height x width x depth	33,9 x 20,4 x 20,4 cm
Order No.	00210/II 00210/TR/II (with 100 V transformer)



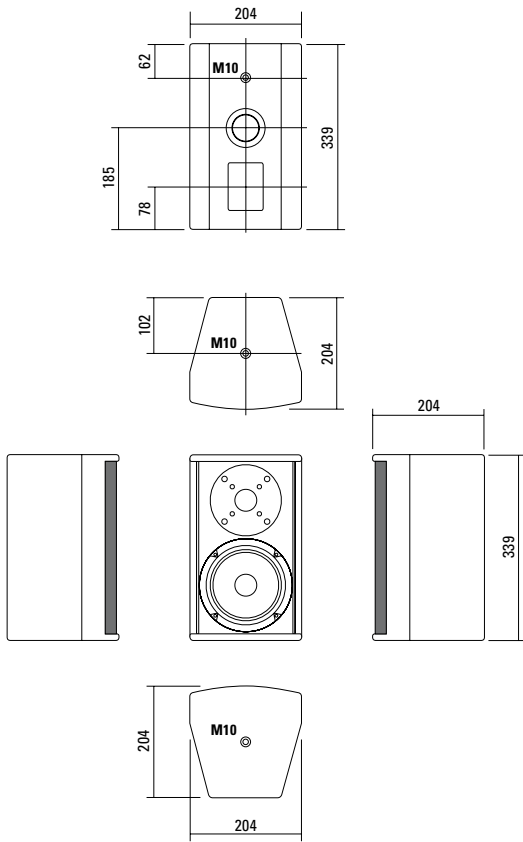
Insgesamt drei M10 Flugpunkte können zur Montage des umfangreichen Zubehörs genutzt werden.



Eine tiefere Abstimmung erfolgt durch den Austausch des rückwärtigen Bass-reflex-tunnels.



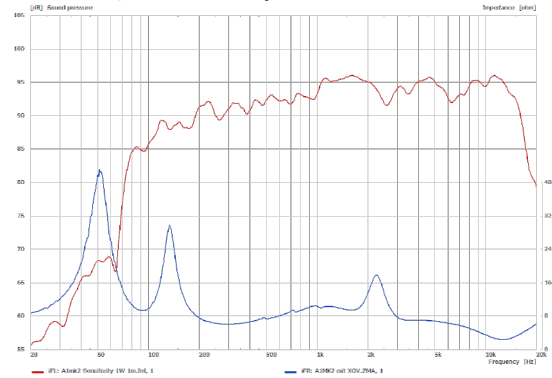
DIMENSIONS



Controller Setups:

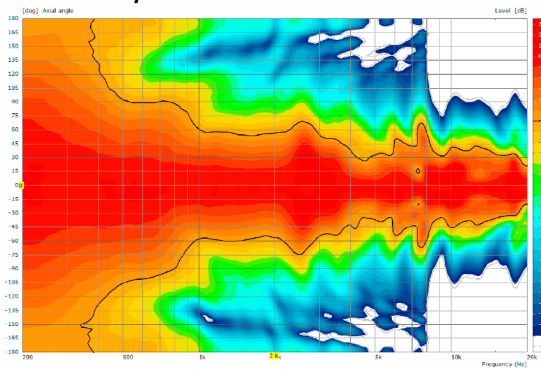
<https://www.seeburg.com/de/downloads>

Sensitivity 1 W @ 1 m + Impedance

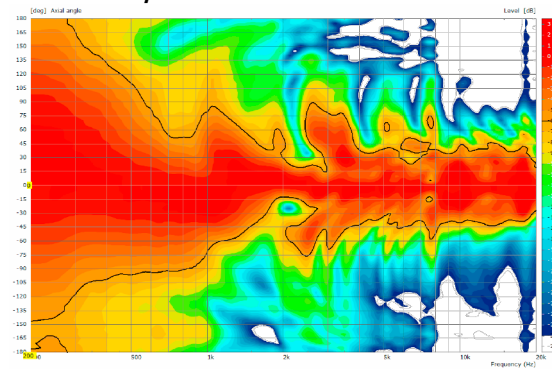


MEASUREMENTS

2D Directivity Plot - horizontal



2D Directivity Plot - vertical





Flying Bracket

for A 1 / TS Nano,
horizontal alignment,
incl. (2 x M10 x 20 socket head
screws, 2 x 40 mm rubber washers)

Order No. **01210/H/set/w** (RAL 9010)
Order No. **01210/H/set**



Flying J-Bracket

for A 1 / GL 8 / X 1 / X 2 / TS Nano,
horizontal and vertical alignment,
incl. (white version: 1 x M10 x 20
socket head screws, black version:
1 x M10 x 20 adjustable handle
screw)

Order No. **01212/J/set/w** (RAL 9010)
Order No. **01212/J/set**



Handle Screw

for flying brackets, adjustable
M10 x 20

Order No. **08375/20**



Rubber Washer

for flying brackets,
5 mm x 40 mm Ø

Order No. **01206**



Knurled Head Nut

reduction screw for fastening
M10 Pole Mount Adapter (08126)

Order No. **73755**



Pole Mount Adapter

35 mm ø → M10 x 16 mm,
M8 x 20 star knob screw

Order No. **08126**



Flange

with ball and socket joint,
with additional locking screw,
M10 x 15, max. load 15 kg

Order No. **08125**



TV Spigot

10 mm internal thread,
28 mm Ø

Order No. **08128**



Quick Trigger Clamp

max. load 100 kg

Order No. **01223/100 kg**



Quick Trigger Clamp - small

M10, max. load 20 kg

Order No. **01223/20 kg**



Truss Clamp

incl. M10 Adapter,
max. load 15 kg

Order No. **01221**



Steel Safety

4 mm x 600 mm, black,
max. load 10 kg (BGI 810-3),
quick connector undetachably

Order No. **01376/4**



Chain Fastener

VBS 7 mm

Order No. **01378**



Ring Screw

M10– DIN 580

Order No. **73700** (zincd)

Order No. **73700/sw** (black zincd)



ACCESSORIES A 1

Wall Mount



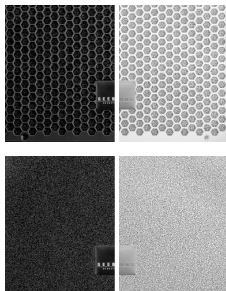
ball and socket joint flange (08125)
+ 08125/plate
Order No. **08125/set**

Wall Mount



for permanent installation,
incl. tilt angle stop,
M10, max. load 15 kg
Order No. **08131/F/w** (RAL 9010)
Order No. **08131/F**

Honeycomb Grilles



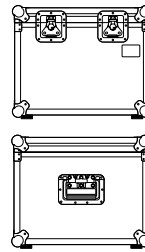
for A 1 front replacement.
Foam behind grille
Order No. **97002/hex/compl**
Order No. **97002/hex/compl/w**
(RAL 9010)
Foam in front of grille
Order No. **97002/compl**
Order No. **97002/compl/w**
(RAL 9010)

Bag



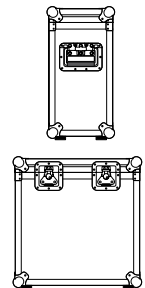
for 2 x A 1 / 2 x TS Nano, padded
with pocket for accessories
Order No. **01249**

Flight Case Trunk



for 4 pcs. TS Nano / A 1,
with flying bracket, standard, 7 mm
birch multiplex, PVC coated, 2 x
recessed sprung handles, 2 x butterfly
catches, rubber feet, partition walls,
interior lined with felt.
Order No. **16005**

Flight Case Trunk



for 2 pcs. TS Nano / A 1,
with flying bracket and flange,
standard, 7 mm birch multiplex, PVC
coated, 2 x recessed sprung handles,
2 x butterfly catches, rubber feet,
partition walls, interior lined with felt.
Order No. **16006**

