

X6
COAXIAL



Multifunktionales und kompaktes 2-Wege System der Oberklasse. Der koaxiale Aufbau sorgt in Kombination mit einem aufwendig entwickelten und großflächigen Horn für ein absolut gleichmäßiges Übertragungsverhalten auch außerhalb der Hauptabstrahlachse. Hochleistungs-Neodymantriebe und Langhubschwingspulen sorgen für einen hohen Wirkungsgrad bei gleichzeitig stark reduzierten Verzerrungen. Für die Installation und den universellen Einsatz stehen neun M10 Gewindeeinsätze zur Aufnahme des MultiRigg™ und weiteren Zubehörs zur Verfügung.

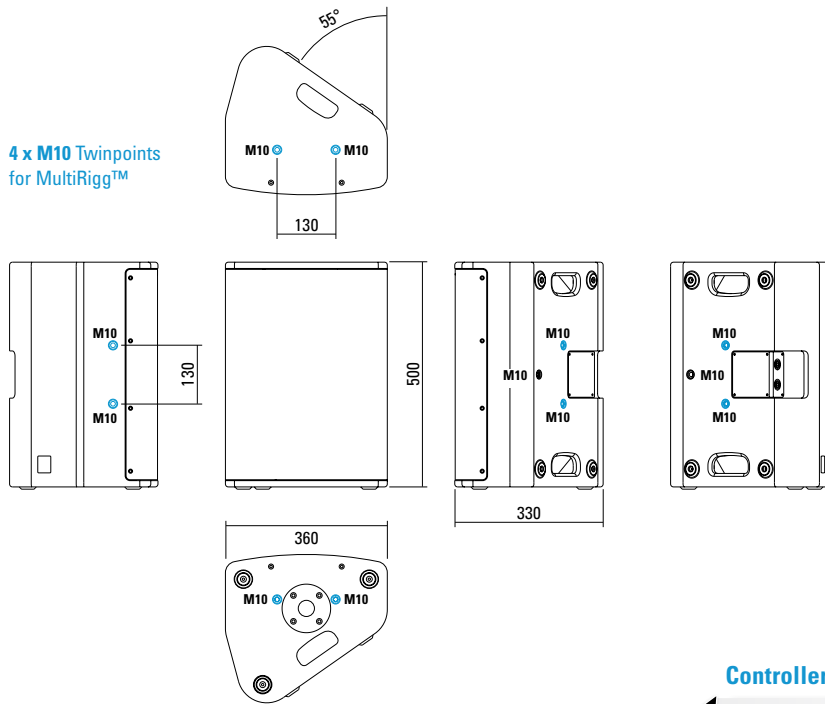
PRODUCT SPECIFICATIONS

Speaker Components	12" Nd (3,5" VC) / 1,4" Nd (3" VC)
Description	Multifunctional Coaxial Sound System
Power AES / Peak	500 W / 1500 W
Impedance nominal	8 Ω
SPL 1 W / Peak @ 1 m	99 dB / 131 dB
Usable Range	55 Hz - 18 kHz (-6 dB)
Tuning Frequency Excursion minimum	65 Hz
X - Overpoint acoustical	1 kHz
Coverage horizontal / vertical	80° x 60° - rotatable
Connectors	2 x Neutrik Speakon NL4MP in/out Coding: 1 +/- HiMid, 2 +/- loop thru
Handles	2 x
Rigging / Fittings	9 x M10 To be used with MultiRigg 35 mm pole mount
Weight	18,5 kg
Size height x width x depth	50,0 x 36,0 x 33,0 cm
Order No.	01095



DIMENSIONS

4 x M10 Twinpoints
for MultiRigg™

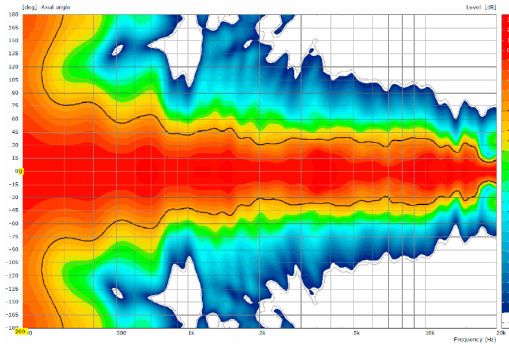


Controller Setup:

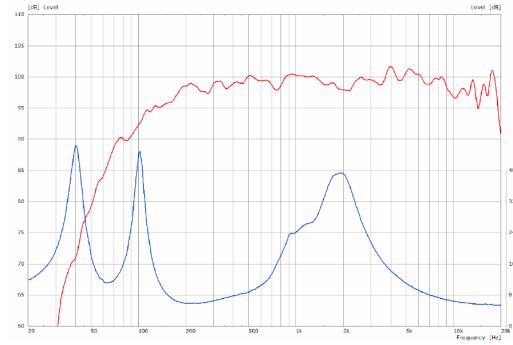
<https://www.seeburg.net/de/downloads>

MEASUREMENTS

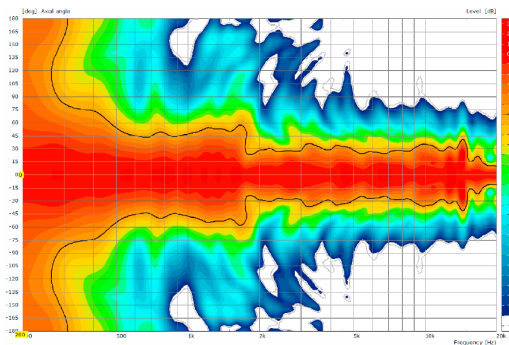
2D Directivity Plot - horizontal



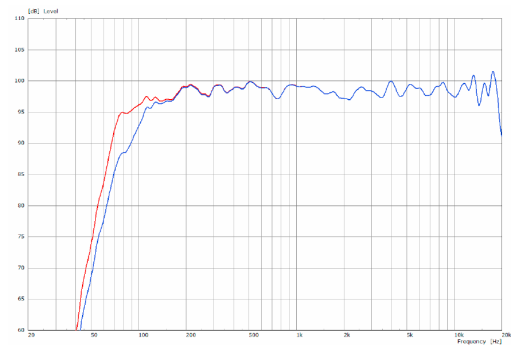
Sensitivity 1 W @ 1 m + Impedance



2D Directivity Plot - vertical



Frequency Response with Presets



ACCESSORIES X 6

MultiRigg™



swiveling fastening solution for horizontal and vertical alignment, for flown / ground stacked / mounted applications, incl. accessories (2 x star knob screws M10 x 18 mm, 1 x handle screw M8 x 55 mm), max. load 50 kg
Order No. **01360**

Star Knob Screw



M10 x 18 mm
Order No. **08377**

Flange



35 mm Ø → M10
Order No. **08126**

Knurled Head Screw



reduction screw for fastening M10 Flange (08126).
Order No. **73755**

TV Spigot



10 mm internal thread, 28 mm Ø
Order No. **08128**

Steel Safety



6 mm x 600 mm, black, max. load 22 kg (BGI 810-3), quick connector undetachably
Order No. **01376/6**

Ring Screw



M10– DIN 580
Order No. **73700**

Doughty Quick Trigger Clamp



max. load 100 kg
Order No. **01223/100 kg**

Wall Mount



with tilt unit, max. load 40 kg
Order No. **08130**

Cover



for X 6, padded
Order No. **01225/X6**

