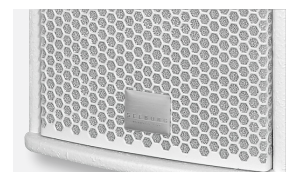
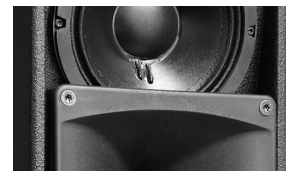
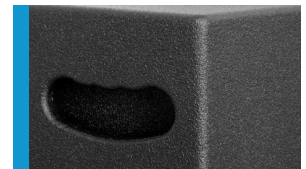




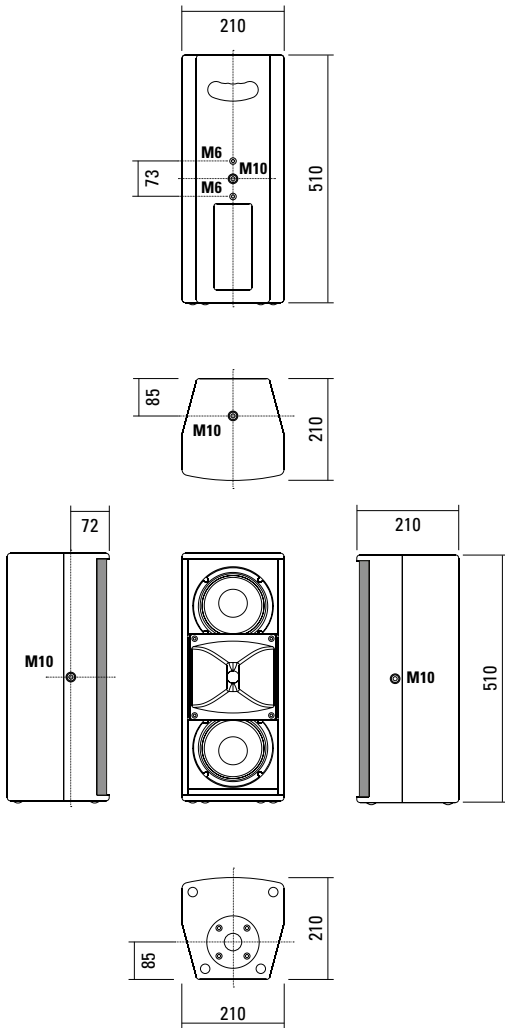
Unauffällig elegantes und kräftiges System für die Festinstallation und Industriepäsentation. Die optimierte 2 x 6,5" / 1" Treiber Konfiguration mit großem Horn sorgt für gutes Abstrahlverhalten, Sprachverständlichkeit und Reichweite. Vier M10 Aufnahmepunkte (optional fünf bei Austausch gegen die werkseitig montierte HS-Flanschbuchse) ermöglichen in Kombination mit dem Zubehör eine einfache Installation in Horizontal- und Vertikalausrichtung.

## PRODUCT SPECIFICATIONS

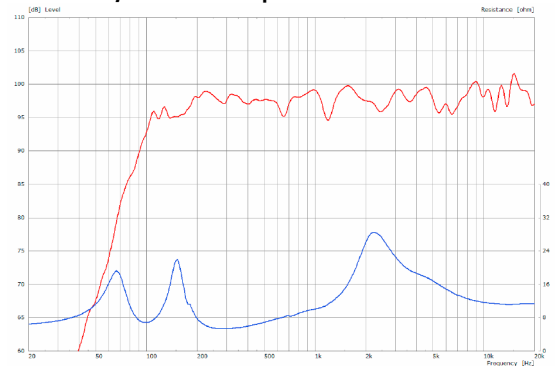
<b>Speaker Components</b>	2 x 6,5" Nd (2" VC) / 1" (1,7" VC)
<b>Description</b>	HiMid Sound System
<b>Power</b> AES / Peak	400 W / 1200 W
<b>Impedance</b> nominal	8 Ω
<b>SPL</b> 1 W / Peak @ 1 m	97 dB / 128 dB
<b>Usable Range</b>	80 Hz - 19 kHz
<b>Tuning Frequency</b> excursion minimum	95 Hz
<b>X - Overpoint</b> acoustical	1,5 kHz
<b>Coverage</b> horizontal / vertical	90° x 60° - rotatable
<b>Connectors</b>	2 x Speakon NL4MP in/out Coding: 1 +/- HiMid, 2 +/- loop thru
<b>Handles</b>	1 x
<b>Rigging / Fittings</b>	4 x M10, 2 x M6 35 mm pole mount
<b>Weight</b>	9,5 kg
<b>Size</b> height x width x depth	51,0 x 21,0 x 21,0 cm
<b>Order No.</b>	<b>00230/III</b>



## DIMENSIONS

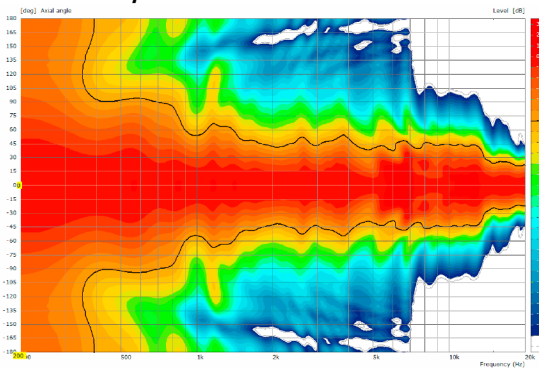


**Sensitivity 1 W @ 1 m + Impedance**

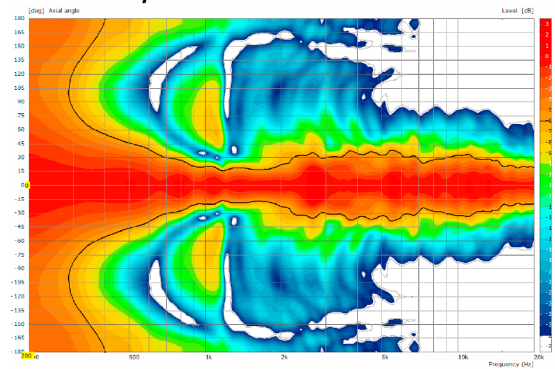


## COVERAGE PATTERNS

**2D Directivity Plot - horizontal**



**2D Directivity Plot - vertical**



**Flying Bracket**



for A 2,  
horizontal alignment,  
incl. (2 x M10 x 20 socket head  
screws, 2 x rubber washers, 1 x plate)

Order No. **01214/H/set/w** (RAL 9010)  
Order No. **01214/H/set**

**Flying Bracket**



for A 2,  
incl. (black version: 2 x M10 x 20  
knurled screws, 2 x rubber washers  
white version: 2 x M10 x 20 socket  
head screws, 2 x rubber washers)

Order No. **01214/set/w** (RAL 9010)  
Order No. **01214/set**

**Knurled Screw**

M10 x 20 mm

Order No. **73750/w** (RAL 9010)  
Order No. **73750**



**Rubber Washer**

for flying brackets,  
5 mm x 40 mm Ø

Order No. **01206**



**Plate**

for A 2 / A 3 flying brackets,  
horizontal alignment,  
replacement for pole mount flange,  
110 mm Ø flange with M10 nut

Order No. **08119/M10/w** (RAL 9010)  
Order No. **08119/M10**



**Knurled Head Nut**

reduction screw for fastening  
M10 Pole Mount Adapter (08126)

Order No. **73755**



**Pole Mount Adapter**

35 mm Ø → M10 x 16 mm,  
M8 x 20 star knob screw

Order No. **08126**



**Flange**

with ball and socket joint,  
with additional locking screw,  
M10 x 15, max. load 15 kg

Order No. **08125**



**Quick Trigger Clamp**

max. load 100 kg

Order No. **01223/100 kg**



**Quick Trigger Clamp - small**

M10, max. load 20 kg

Order No. **01223/20 kg**



**Truss Clamp**

incl. M10 Adapter,  
max. load 15 kg

Order No. **01221**



**Steel Safety**

4 mm x 600 mm, black,  
max. load 10 kg (BGI 810-3),  
quick connector undetachably

Order No. **01376/4**



**Ring Screw**

M10– DIN 580

Order No. **73700** (zincd)

Order No. **73700/sw** (black zincd)



**TV Spigot**

10 mm internal thread,  
28 mm Ø

Order No. **08128**



## ACCESSORIES A 2

### Wall Mount



bar: 269 mm, max. load 40 kg,  
incl. (M10 x 70 mm socket head screw,  
M10 hex lock nut and flat washer)

Order No. **08130/F/269/w** (RAL 9010)  
Order No. **08130/F/269**

### Wall Mount



for permanent installation,  
incl. tilt angle stop,  
M10, max. load 15 kg

Order No. **08131/F/w** (RAL 9010)  
Order No. **08131/F**

### Wall Mount



2 x M6 fixing holes (d=73 mm),  
1 x M10 fixing hole (center),  
max. load 25 kg

Order No. **03034/w** (RAL 9010)  
Order No. **03034**

### Wall Mount



ball and socket joint flange (08125)  
+ 08125/plate

Order No. **08125/set**

### Spacer



for Wall Mount (03034)  
polyurea coated

Order No. **03034/spc**

### Cover



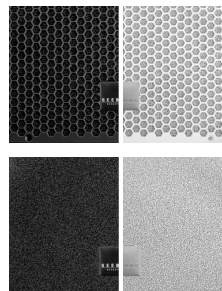
for A 2, padded  
Order No. **01243**

### Rain Cover



for A 2,  
with zipper  
Order No. **01243/outdoor**

### Honeycomb Grilles



for A 2 front replacement.

Foam behind grille

Order No. **97004/hex/compl**

Order No. **97004/hex/compl/w**  
(RAL 9010)

Foam in front of grille

Order No. **97004/compl**

Order No. **97004/compl/w**  
(RAL 9010)



Spacer -> Wall Mount