

Multifunctional Coaxial Sound System **X8**

X8
COAXIAL



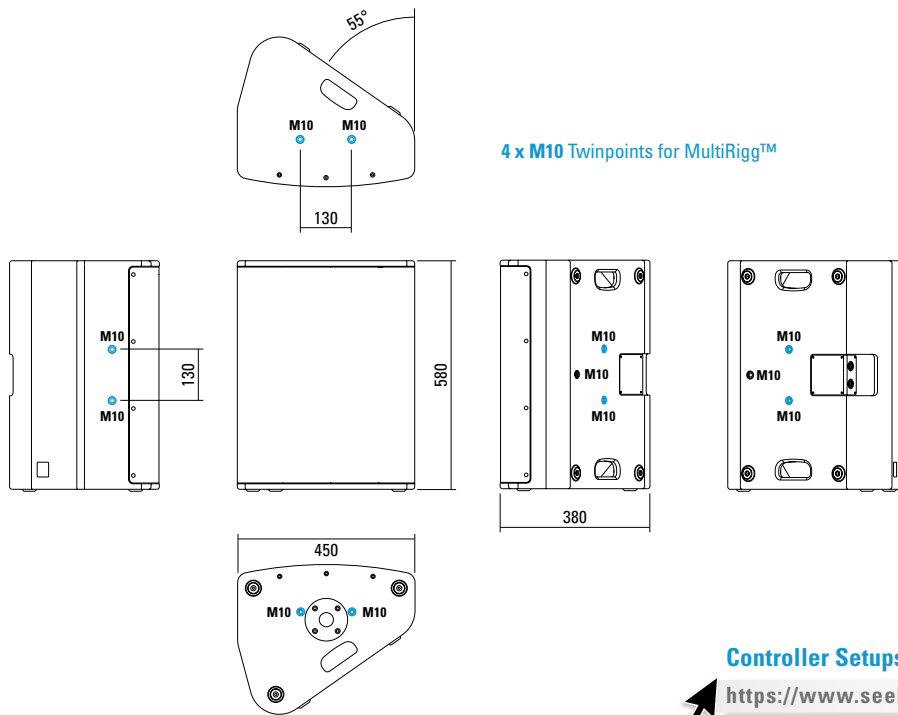
Multifunktionales und kompaktes 2-Wege System der Oberklasse. Der koaxiale Aufbau sorgt in Kombination mit einem aufwendig entwickelten und großflächigen Horn für ein absolut gleichmäßiges Übertragungsverhalten auch außerhalb der Hauptabstrahlachse. Hochleistungs-Neodymantriebe und Langhubschwingspulen sorgen für einen hohen Wirkungsgrad bei gleichzeitig stark reduzierten Verzerrungen. Für die Installation und den universellen Einsatz stehen neun M10 Gewindeeinsätze zur Aufnahme des MultiRigg und weiteren Zubehörs zur Verfügung.

PRODUCT SPECIFICATIONS

Speaker Components	15" Nd (3,5" VC) 1,4" Nd Compression Driver (3" VC)
Description	Multifunctional Coaxial Sound System
Power AES / Peak	600 W / 1800 W
Impedance nominal	8 Ω
SPL 1 W / Peak @ 1 m	101 dB / 134 dB
Usable Range	50 Hz - 18 kHz (-6dB)
Tuning Frequency Excursion minimum	60 Hz
X - Overpoint acoustical	1 kHz
Coverage horizontal / vertical	80° x 60° - rotatable
Connectors	2 x Neutrik Speakon NL4MP in/out Coding: 1 +/- HiMid, 2 +/- loop thru
Handles	2 x
Rigging / Fittings	9 x M10 To be used with MultiRigg 35 mm pole mount
Weight	22,5 kg
Size height x width x depth	58,0 x 45,0 x 38,0 cm
Order No.	01097

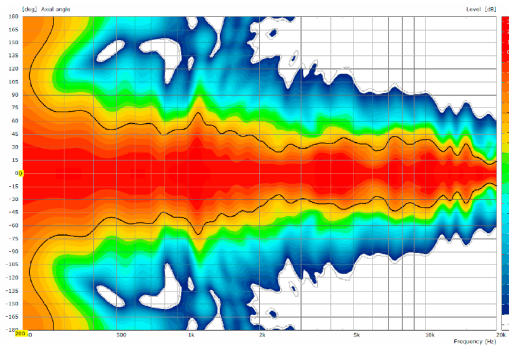


DIMENSIONS

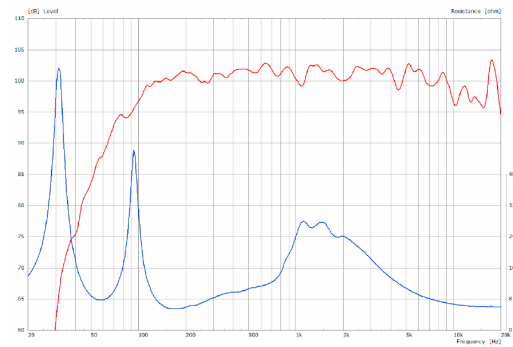


MEASUREMENTS

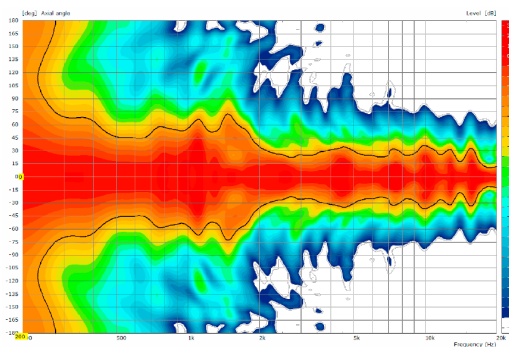
2D Directivity Plot - horizontal



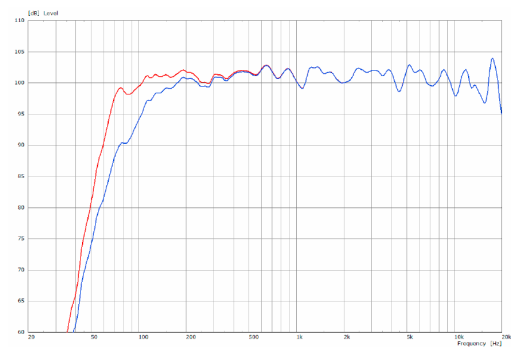
Sensitivity 1 W @ 1 m + Impedance



2D Directivity Plot - vertical



Frequency Response with Presets



ACCESSORIES X 8

MultiRigg™



swiveling fastening solution for horizontal and vertical alignment, for flown / ground stacked / mounted applications, incl. accessories (2 x star knob screws M10 x 18 mm, 1 x handle screw M8 x 55 mm), max. load 50 kg
Order No. **01360**

Star Knob Screw



M10 x 18 mm
Order No. **08377**

Flange



35 mm Ø → M10
Order No. **08126**

Knurled Head Screw



reduction screw for fastening M10 Flange (08126).
Order No. **73755**

TV Spigot



10 mm internal thread, 28 mm Ø
Order No. **08128**

Steel Safety



8 mm x 600 mm, black, max. load 40 kg (BGI 810-3), quick connector undetachably
Order No. **01376/8**

Ring Screw



M10– DIN 580
Order No. **73700**

Doughty Quick Trigger Clamp



max. load 100 kg
Order No. **01223/100 kg**

Wall Mount



with tilt unit, max. load 40 kg
Order No. **08130**

Cover



for X 8, padded
Order No. **01225/X8**

